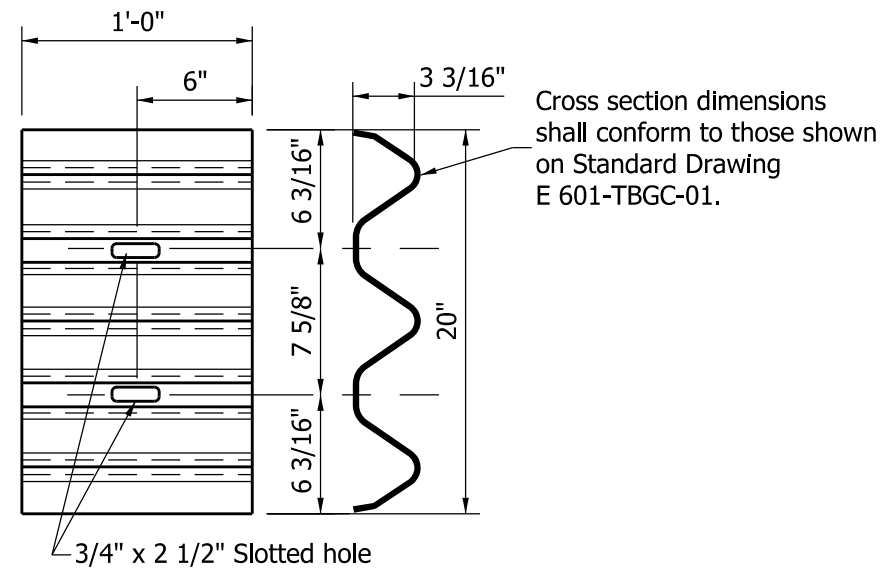


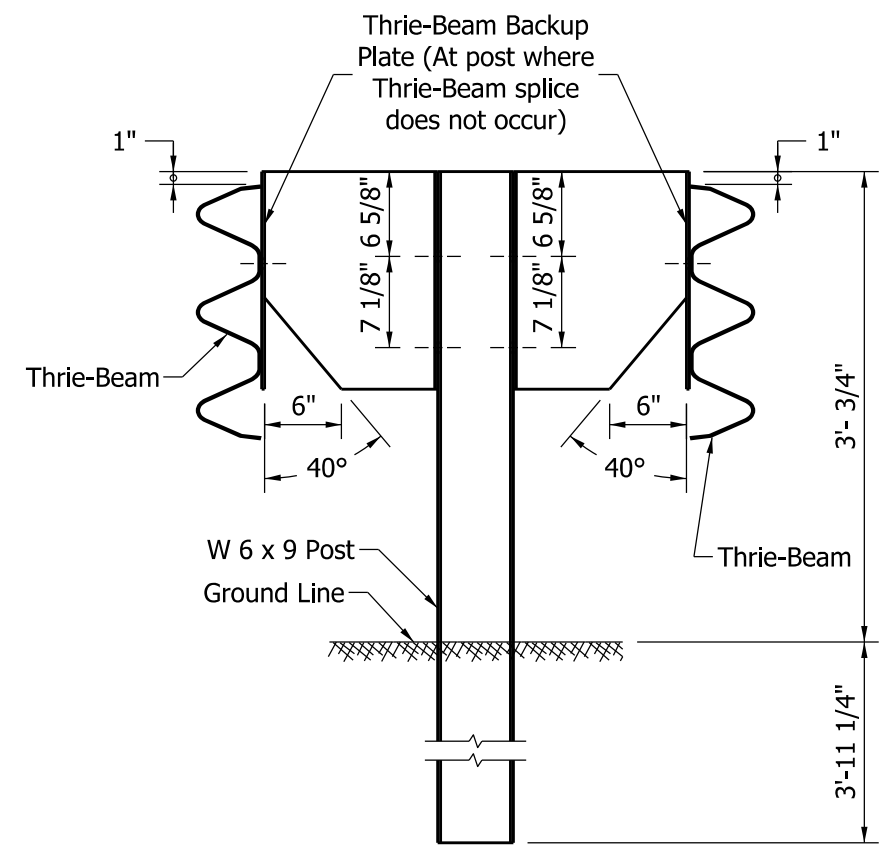
THRIE BEAM GUARDRAIL



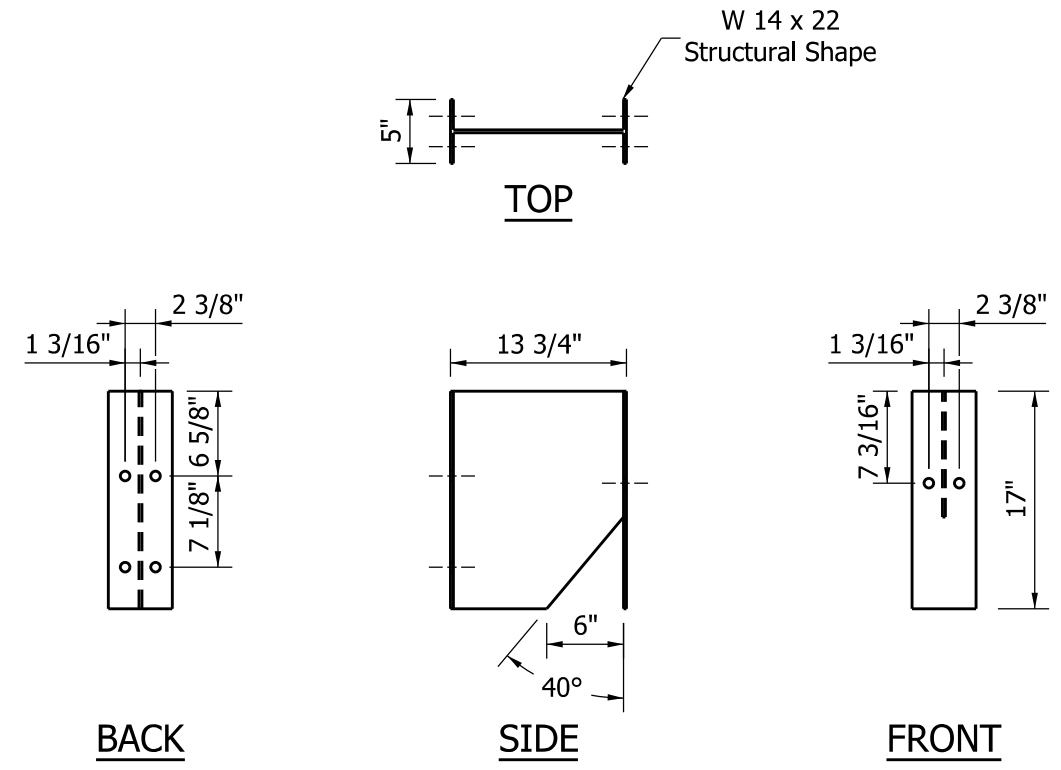
**THRIE BEAM GUARDRAIL BACK-UP PLATE
AT LOCATIONS WITHOUT SPLICE**

NOTES:

1. See Standard Drawing E 601-TBGC-01 for Thrie Beam rail section details.
2. See Standard Drawing E 601-TTGB-04 for W 6 x 9 post hole pattern details.
3. Typical post spacing for Thrie Beam Guardrail and Double Faced Thrie Beam Guardrail is 6'-3".
4. Only the blockout material shown may be used.
5. All blockout holes drilled or punched to 3/4" diameter.



DOUBLE FACED THRIE BEAM GUARDRAIL



**THRIE BEAM GUARDRAIL BLOCKOUT
(STEEL ONLY)**

INDIANA DEPARTMENT OF TRANSPORTATION			
THRIE BEAM GUARDRAIL DETAILS			
SEPTEMBER 2011			
STANDARD DRAWING NO.		E 601-MTGR-01	
	/s/ <i>Richard L. VanCleave</i>		09/01/11
	DESIGN STANDARDS ENGINEER		DATE
	/s/ <i>Mark A. Miller</i>		09/01/11
DESIGN STANDARDS ENGINEER		CHIEF HIGHWAY ENGINEER	
		DATE	